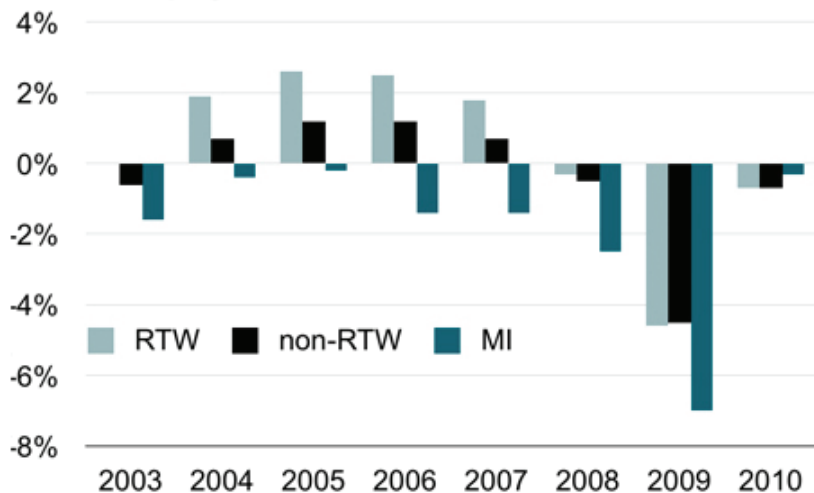


### Annual Employment Growth



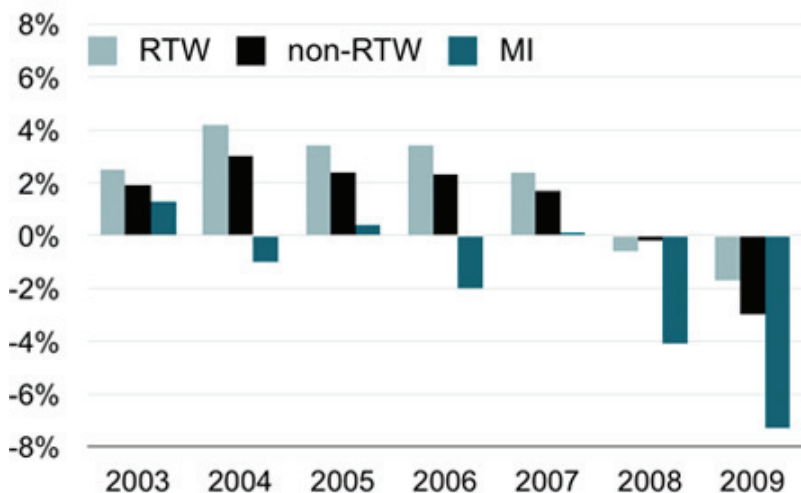
Source: Bureau of Labor Statistics



Measured by the Bureau of Labor Statistics establishment survey, this measures the number of payroll jobs in the economy, excluding farm jobs. RTW states held an advantage in nearly every year while non-RTW states and Michigan sank. Recently, they've been growing at roughly the same rates.

	2003	2004	2005	2006	2007	2008	2009	2010
Michigan	-1.6%	-0.4%	-0.2%	-1.4%	-1.4%	-2.5%	-7.0%	-0.3%
nonRTW	-0.6%	0.7%	1.2%	1.2%	0.7%	-0.5%	-4.5%	-0.7%
RTW	0.0%	1.9%	2.6%	2.5%	1.8%	-0.3%	-4.6%	-0.7%

### Annual Real Gross Domestic Product Growth



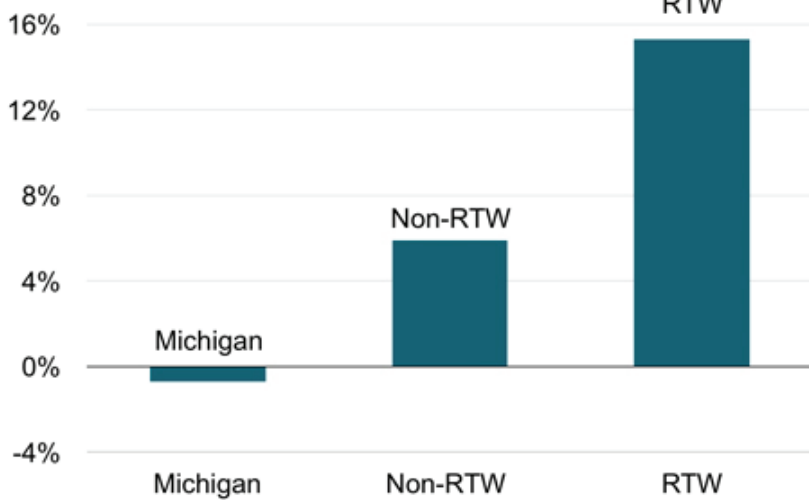
Source: Bureau of Economic Analysis



Gross Domestic Product is the value of the goods and services produced in an economy, according to the Bureau of Economic Analysis. These figures are adjusted to inflation. Except for 2008, RTW states outperformed non-RTW states every year since 2003.

	2002	2003	2004	2005	2006	2007	2008	2009
Michigan		1.3%	-1.0%	0.4%	-2.0%	0.1%	-4.1%	-7.3%
nonRTW		1.9%	3.0%	2.4%	2.3%	1.7%	-0.2%	-3.0%
RTW		2.5%	4.2%	3.4%	3.4%	2.4%	-0.6%	-1.7%

### Census Population Growth, 2000 - 2010



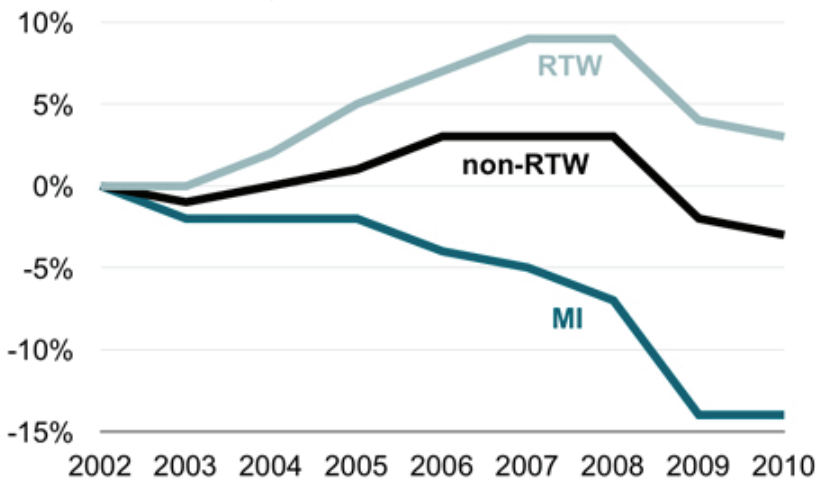
Source: U.S. Census Bureau



The new 2010 Census figures show that RTW states grew their populations substantially more than non-RTW states. Michigan was the only state of any kind whose population fell.

<b>Michigan</b>	-0.70%
<b>Non-RTW</b>	5.90%
<b>RTW</b>	15.30%

### Cumulative Employment Growth



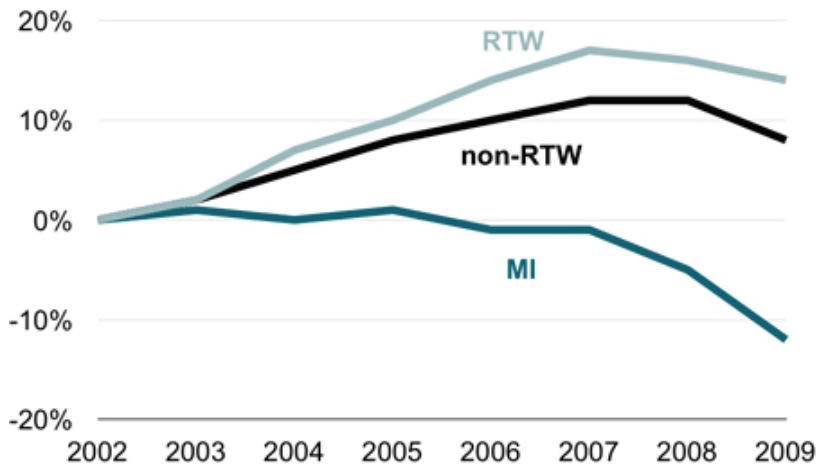
Source: Bureau of Labor Statistics



Measured by the Bureau of Labor Statistics establishment survey, this measures the number of payroll jobs in the economy, excluding farm jobs. Since 2000, RTW states added 6 percent more jobs.

	2002	2003	2004	2005	2006	2007	2008	2009	2010
Michigan	0%	-2%	-2%	-2%	-4%	-5%	-7%	-14%	-14%
nonRTW	0%	-1%	0%	1%	3%	3%	3%	-2%	-3%
RTW	0%	0%	2%	5%	7%	9%	9%	4%	3%

### Cumulative Gross Domestic Product Growth



Source: Bureau of Economic Analysis



Gross Domestic Product is the value of the goods and services produced in an economy, according to the Bureau of Economic Analysis. These figures are adjusted to inflation. Over time, RTW states outperform nonRTW states while Michigan lost GDP.

	2002	2003	2004	2005	2006	2007	2008	2009
Michigan	0%	1%	0%	1%	-1%	-1%	-5%	-12%
nonRTW	0%	2%	5%	8%	10%	12%	12%	8%
RTW	0%	2%	7%	10%	14%	17%	16%	14%